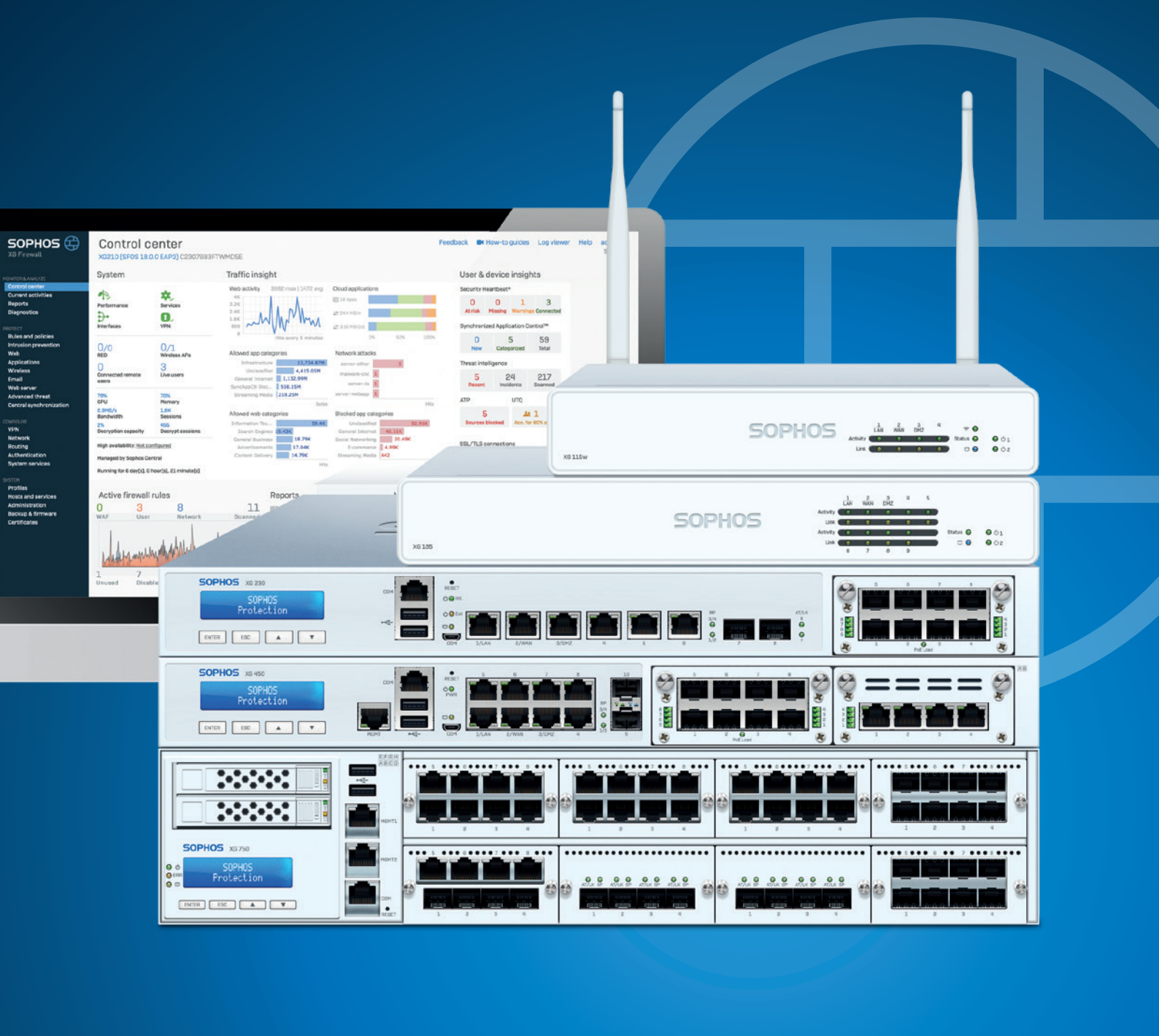




Sophos XG Firewall

The world's best visibility, protection, and response.

Sophos XG Firewall brings a fresh new approach to the way you manage your firewall, respond to threats, and monitor what's happening on your network.



SOPHOS
XG Firewall

- MONITOR & ANALYZE
- Control center
- Current activities
- Reports
- Diagnose
- PROTECT
- Rules and policies
- Intrusion prevention
- Web
- Applications
- Wireless
- Live users
- Email
- Web server
- Advanced threat
- Central synchronization
- COMPLY
- VPN
- Network
- Routing
- System services
- SYSTEM
- Profiles
- Hosts and services
- Administration
- Backup & firmware
- Certificates

Control center

XG21.0 (SFPoS 18.0.0 EAP) C2307893FTWMCSE

Feedback How-to guides Log viewer Help

System

Performance Services Interfaces YPN

0/0 0/1
Connected remote users Wireless APs Live users

70% CPU 70% Memory
3.2M/s Bandwidth 650 Sessions
High availability: test configured
Managed by Sophos Central
Running for 6 days(3), 0 hour(0), 21 minute(0)

Traffic insight

Web activity 3852 new | 1472 avg

Allowed app categories

Infrastructure	11,754,876
Microsoft	4,418,038
General Internet	1,132,898
Synchronous Disc	1,588,154
Streaming Media	219,238

Allowed web-categories

Information Tech.	35,442
Search Engines	25,936
General Business	19,756
Advertisements	17,446
Content Delivery	14,796

Cloud applications

Skype	14.7%
Zoom	22.2%
Microsoft Office	22.3%
Zoom Meeting	22.3%

User & device insights

Security Heartbeat*

At Risk	0	0	1	3
Missing				
Not Config				
Connected				

Synchronized Application Control™

New	0	5	59
Categorized			Total

Network attacks

server-rtsp	2
malware-cnc	1
server-ftp	1
server-webapp	1

Threat intelligence

Recent	5	24	217
Incidents			Exploited

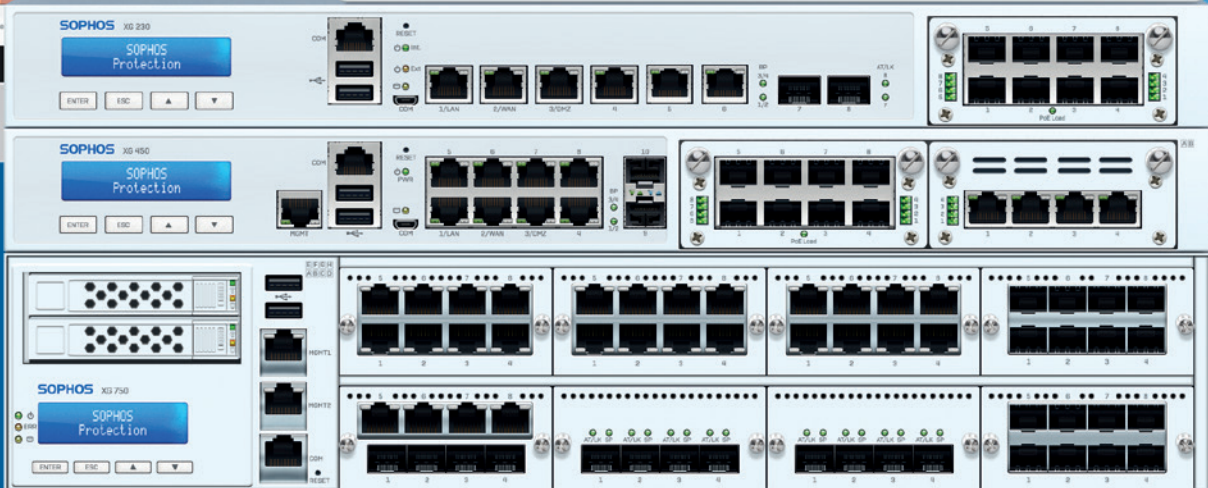
ATP UFG

5 Sources Blocked	1 Acc. for BCL
-------------------	----------------

Blocked app categories

Unclassified	31,816
General Internet	16,132
Social Networking	25,406
E-commerce	4,494
Streaming Media	142

SSL/TLS connections



Sophos XG Firewall

Sophos XG Firewall introduces an innovative approach to the way that you manage your firewall, and how you can detect and respond to threats on your network.

See it. Stop it. Secure it.

Our comprehensive next-generation firewall protection has been built to expose hidden risks, block both known and unknown threats, and automatically respond to incidents.



Exposes hidden risks

Sophos XG Firewall provides unrivaled visibility into risky users, unknown and unwanted apps, advanced threats, suspicious payloads, encrypted traffic and much more. Rich on-box reporting is built-in and powerful centralized reporting for multiple firewalls is available in the cloud.



Blocks unknown threats

Sophos XG Firewall provides all the latest advanced technology you need to protect your network from ransomware and advanced threats including top-rated IPS, Advanced Threat Protection, Cloud Sandboxing and full AI-powered threat analysis, Dual AV, Web and App Control, Email Protection and a full-featured Web Application Firewall. And it's easy to setup and manage.



Automatically responds to incidents

XG Firewall is the only network security solution that is able to fully identify the source of an infection on your network and automatically limit access to other network resources in response. This is made possible with our unique Sophos Security Heartbeat that shares telemetry and health status between Sophos endpoints and your firewall.



The Xstream Advantage

The XG Firewall Xstream architecture is engineered to deliver extreme levels of visibility, protection, and performance to help address some of the greatest challenges facing network administrators today.

Xstream SSL Inspection

According to the latest statistics, approximately 80% of web traffic is encrypted, making it invisible to most firewalls. An increasing amount of malware and potentially unwanted apps exploit the fact that organizations are simply not using SSL inspection. Network administrators' main fears are that SSL inspection will have a performance impact or cause something to break, impacting the user experience.

XG Firewall removes the blind spots caused by encrypted traffic by allowing you to use SSL inspection whilst maintaining performance efficiency.

Xstream DPI Engine

We believe you should never have to decide between security and performance. XG Firewall includes a high-speed Deep Packet Inspection (DPI) engine to scan your traffic for threats without a proxy slowing down the process. The firewall stack can completely offload the processing to the DPI engine, significantly reducing latency and so improving overall efficiency.

XG Firewall provides robust deep packet threat protection in a single streaming engine for AV, IPS, Web, App Control and SSL inspection.

Xstream Network Flow FastPath

Traffic which is known to be secure can be offloaded to the Xstream Network Flow FastPath. This accelerated path for trusted traffic boosts performance dramatically by freeing up resources from unnecessary traffic inspection tasks. This is particularly important for voice and video applications which are very sensitive to latency and so can quickly lead to a degradation of the user experience. XG Firewall includes automatic and policy-based intelligent offloading for trusted traffic processing at wire speed.



Sophos Central

Sophos Central is at the heart of everything we do. Our cloud management platform provides a single pane of glass to not only manage your firewalls, but also your full portfolio of Sophos security solutions.

Central Management



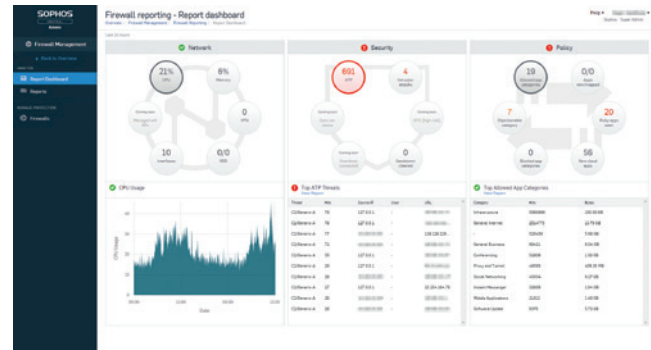
Simply manage multiple firewalls

Sophos Central is the ultimate cloud-management platform - for all your Sophos products. It makes day-to-day setup, monitoring, and management of your XG Firewall easy. It also provides helpful features such as alerting, backup management, one-click firmware updates and rapid provisioning of new firewalls.

- Manage all your XG Firewalls and other Sophos products from a single console
- Configure changes and apply them to a group of firewalls or manage each firewall individually
- Create a backup schedule and store up to 5 backups in the cloud

Note: Central Management is available at no extra cost.

Central Reporting



Firewall Reporting in the cloud

Sophos Central includes powerful reporting tools that enable you to visualize your network, web, application activity, and security over time. You get a flexible reporting experience that combines a variety of built-in reports – enabling you to report what you want, how you want.

- Increase your visibility into network activity through analytics
- Analyze data to identify security gaps, suspicious user behavior or other events requiring policy changes
- Use the pre-defined modules or customize each report for specific use cases

Note: Central Reporting is available at no extra cost for the storage of up to 7 days of report data. Premium options with longer data retention will soon be available for optional purchase.

Zero-touch Deployment

Using Sophos Central, you can create a configuration for an XG firewall which you can then deploy at your convenience, for example, at a remote site. There is no need for technical staff on-site, simply provide the configuration file, store it on a USB key and boot the appliance with the USB key connected.

Synchronized Security

Security Heartbeat™ - Your firewall and your endpoints are finally talking

Sophos XG Firewall is the only network security solution that is able to fully identify the user and source of an infection on your network and automatically limit access to other network resources in response. This is made possible with our unique Sophos Security Heartbeat that shares telemetry and health status between Sophos endpoints and your firewall, and integrates endpoint health into firewall rules to control access and isolate compromised systems.

The good news is, this all happens automatically, and is successfully helping numerous businesses and organizations to save time and money in protecting their environments today.

Synchronized Application Control

Using Security Heartbeat, we can do much more than just see the health status of an endpoint. We also have a solution to one of the biggest problems most network administrators face today - lack of visibility into network traffic.

Synchronized Application Control automatically identifies, classifies and controls encrypted, custom, evasive, and generic HTTP or HTTPS applications which are currently going unidentified.

What Next-Gen Firewalls See Today

You can't control what you can't see. All firewalls today depend on static application signatures to identify apps. But those don't work for most custom, obscure, evasive, or any apps using generic HTTP or HTTPS.

What XG Firewall Sees

XG Firewall utilizes Synchronized Security to automatically identify, classify, and control all unknown applications easily blocking the apps you don't want and prioritizing the ones you do.

Lateral Movement Protection

Lateral Movement Protection automatically isolates compromised systems at every point in the network to stop attacks dead in their tracks. Healthy endpoints assist by ignoring all traffic from unhealthy endpoints, enabling complete isolation, even on the same network segment, to prevent threats and active adversaries from spreading or stealing data.

Synchronized User ID

User authentication is critically important in a next-generation firewall but often challenging to implement in a seamless and transparent way. Synchronized User ID eliminates the need for client or server authentication agents by sharing user identity between the endpoint and the firewall through Security Heartbeat. It's just another great benefit of having your firewall and endpoints integrated and sharing information.

Synchronized SD-WAN - Powerful, reliable application routing

Synchronized SD-WAN harnesses the power of Synchronized Security to optimize WAN path selection for your important business applications.

With Synchronized Application Control, discovered applications, which would otherwise be unknown, can be used for traffic matching criteria in SD-WAN routing policies. This is yet another way that Synchronized Security can improve the efficiency of your network.

Protection Modules

You can choose from a number of modules to customize the protection offered by your firewall to your individual needs and deployment scenario.

Network Protection

All the protection you need to stop sophisticated attacks and advanced threats while providing secure network access to those you trust.

Next-gen Intrusion Prevention System

Provides advanced protection from all types of modern attacks. It goes beyond traditional server and network resources to protect users and apps on the network as well.

Security Heartbeat

Creates a link between your Sophos Central protected endpoints and your firewall to identify threats faster, simplify investigation and minimize impact from attacks. Easily incorporate Heartbeat status into firewall policies to automatically isolate compromised systems.

Advanced Threat Protection

Instant identification and immediate response to today's most sophisticated attacks. Multi-layered protection identifies threats instantly and Security Heartbeat provides an emergency response.

Advanced VPN technologies

Adds unique and simple VPN technologies including our clientless HTML5 self-service portal that makes remote access incredibly simple or utilize our exclusive light-weight secure RED (Remote Ethernet Device) VPN technology.

Web Protection

Unmatched visibility and control over all your user's web and application activity.

Powerful user and group web policy

Provides enterprise-level Secure Web Gateway policy controls to easily manage sophisticated user and group web controls. Apply policies based upon uploaded web keywords indicating inappropriate use or behavior.

Application Control and QoS

Enables user-aware visibility and control over thousands of applications with granular policy and traffic-shaping (QoS) options based on application category, risk, and other characteristics. Synchronized Application Control automatically identifies all the unknown, evasive, and custom applications on your network.

Advanced Web Threat Protection

Backed by SophosLabs, our advanced engine provides the ultimate protection from today's polymorphic and obfuscated web threats. Innovative techniques like JavaScript emulation, behavioral analysis, and origin reputation help keep your network safe.

High-performance traffic scanning

Optimized for top performance, our Xstream SSL inspection provides ultra-low latency inspection and HTTPS scanning whilst maintaining performance.

Email Protection

Consolidate your email protection with anti-spam, DLP, and encryption.

Integrated Message Transfer Agent

Ensures always-on business continuity for your email, allowing the firewall to automatically queue mail in the event servers become unavailable.

Live Anti-Spam

Provides protection from the latest spam campaigns, phishing attacks, and malicious attachments.

Self-serve Quarantine

Gives employees direct control over their spam quarantine, saving you time and effort.

SPX Email Encryption

Unique to Sophos, SPX makes it easy to send encrypted email to anyone, even those without any kind of trust infrastructure, using our patent-pending password-based encryption technology.

Data Loss Prevention

Policy-based DLP can automatically trigger encryption or block/notify based on the presence of sensitive data in emails leaving the organization.

Web Server Protection

Harden your web servers and business applications against hacking attempts while providing secure access.

Business Application Policy Templates

Pre-defined policy templates let you protect common applications like Microsoft Exchange Outlook Anywhere or SharePoint quickly and easily.

Protection from the latest hacks and attacks

With a variety of advanced protection technologies including URL and form hardening, deep-linking and directory traversal prevention, SQL injection and cross-site scripting protection, cookie signing and more.

Reverse proxy

With authentication options, SSL offloading, and server load balancing ensure maximum protection and performance for your servers being accessed from the internet.

Sandstorm Protection

AI-driven static and dynamic file analysis techniques combine to bring unprecedented threat intelligence to your firewall and so effectively identify and block ransomware, known and unknown threats.

How to buy Sandstorm Protection

Sandstorm Protection is available as an add-on subscription and is also included in our 'Plus' Bundles, e.g. EnterpriseGuard Plus, FullGuard Plus.

Powered by SophosLabs

Powered by the industry-leading SophosLabs, the Sandstorm Protection subscription includes a fully cloud-based threat intelligence and threat analysis platform. This provides deep learning based file analysis, detailed analysis reporting and a threat meter to show the risk summary for a file.

We use layers of analytics to identify known and potential threats, reduce unknowns and derive verdicts and intelligence reports for the most commonly used file types.

Static File Analysis

By harnessing the power of multiple machine learning models, global reputation, deep file scanning, and more, you can quickly identify threats without the need to execute the files in real time.

Dynamic File Analysis

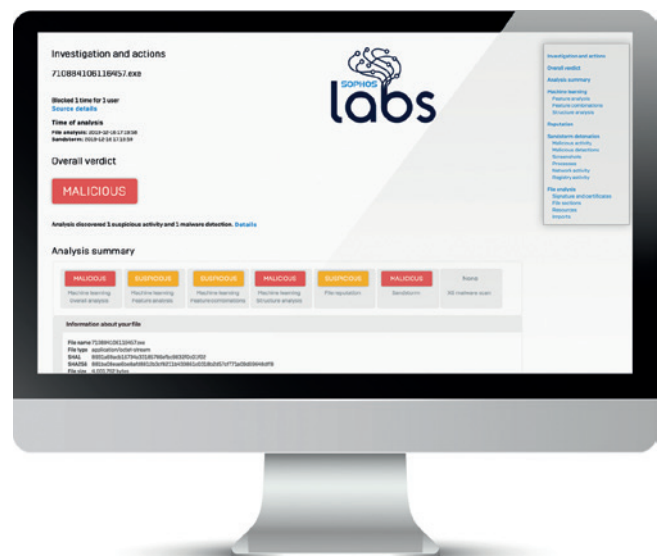
Execute a file in a secure cloud-based sandbox to observe its behavior and intent. Screenshots provide added insight into any key events during the analysis.

Threat Intelligence Analysis Reporting

Rich intelligence reports provide you with much more than just a 'good', 'bad', or 'unknown' verdict. Full insight into the nature and capabilities of a threat are delivered through the use of data science and SophosLabs research.



The Threat Meter provides an almost instant result, even when further analysis is still ongoing.



Sophos XG Series Appliances – at a glance

Our XG Series hardware appliances are purpose-built with the latest multi-core technology, generous RAM provisioning, and solid-state storage. Whether you're protecting a small business or a larger distributed enterprise, you're getting industry leading performance.

Please note: The throughput data below is based upon version 17.x and will be updated shortly.

Product Matrix

Model	Revision #	Form Factor	Tech. Specs			Throughput ¹			
			Ports/Slots (Max Ports)	w-model 802.11 wireless	Swappable Components	Firewall (Mbps)	VPN (Mbps)	NGFW (Mbps)	AV-proxy (Mbps)
XG 86(w)	1	desktop	4	a/b/g/n/ac	n/a	3,000	225	310	360
XG 106(w)	1	desktop	4	a/b/g/n/ac	opt. ext. Power	3,500	360	480	450
XG 115(w)	3	desktop	4	a/b/g/n/ac	opt. ext. Power	4,000	490	1,000	600
XG 125(w)	3	desktop	9/1 (9)	a/b/g/n/ac	opt. ext. Power, 3G/4G	6,500	700	1,100	700
XG 135(w)	3	desktop	9/1 (9)	a/b/g/n/ac	opt. ext. Power, 3G/4G, Wi-Fi*	8,000	1,180	1,200	1,580
XG 210	3	1U	8/1 (16)	n/a	opt. ext. Power	16,000	1,450	2,900	2,300
XG 230	2	1U	8/1 (16)	n/a	opt. ext. Power	20,000	1,700	3,500	2,800
XG 310	2	1U	12/1 (20)	n/a	opt. ext. Power	28,000	2,750	4,500	3,300
XG 330	2	1U	12/1 (20)	n/a	opt. ext. Power	33,000	3,200	6,200	6,000
XG 430	2	1U	10/2 (26)	n/a	opt. ext. Power	41,000	4,800	7,000	6,500
XG 450	2	1U	10/2 (26)	n/a	opt. int. Power	50,000	5,500	9,200	7,000
XG 550	2	2U	8/4 (32)	n/a	Power, SSD, Fan	65,000	8,400	11,700	10,000
XG 650	2	2U	8/6 (48)	n/a	Power, SSD, Fan	85,000	9,000	16,400	13,000
XG 750	2	2U	8/8 (64)	n/a	Power, SSD, Fan	100,000	11,000	18,550	17,000

* 2nd Wi-Fi module option on 135w only (requires XG v17 MR6 or above)

What you get with every XG Series appliance

- Full Wireless Protection included in the Base License
- On-box reporting or reporting for 7 days via Sophos Central
- Free management via Sophos Central
- The flexibility to add optional connectivity modules to adapt your firewall to changes in your environment

Note: The latest XG Firewall (SFOS) version 18.x requires at least 4 GB of RAM.

Sophos XG Series Desktop Appliances

Our Desktop appliances offer the perfect balance between price and performance for your small business or branch offices. All models offer a range of built-in and add-on connectivity options. A 'w' at the end of the model name indicates that the appliance has built-in Wi-Fi.

XG 86 and XG 86w

These entry-level desktop firewalls are the ideal choice for budget-conscious small businesses, retail and small or home offices.

- Optionally available with integrated 802.11ac WLAN
- Fanless

Note: The XG 86 and 86w do not support some advanced features like on-box reporting, dual AV scanning, WAF AV scanning and the email message transfer agent (MTA) functionality. If you need these capabilities, the XG 106(w) is recommended.

See detailed [technical specifications](#)

XG 106, XG 106w, XG 115, XG 115w

These desktop firewall appliances offer an excellent price-to-performance ratio making them ideal for small businesses or branch offices. These models come equipped with 4 GbE copper ports built-in and 1 shared SFP interface, e.g. for use with our optional DSL modem or an SFP Fiber transceiver to connect the device to a server or switch. An optional second power supply provides an unmatched redundancy option in this product segment.

- Optionally available with integrated 802.11ac WLAN
- 4 GbE copper ports built-in and 1 shared SFP
- Optional second power supply

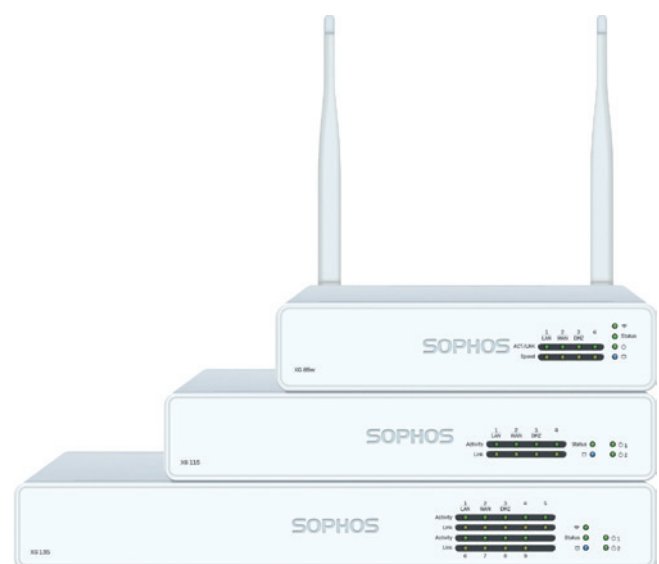
See detailed [technical specifications](#)

XG 125, XG 125w, XG 135, XG 135w

These powerful firewall appliances offer 1U performance with a desktop form factor and price. If you have a small business or branch offices to protect and are working on a tight budget, these models are the ideal choice. These models come equipped with 8 GbE copper ports built-in, plus 1 SFP port, e.g. for use with our optional DSL modem or an SFP Fiber transceiver to connect the device to a server or switch. An expansion bay provides the option to add additional connectivity such as our 3G/4G module. A 2nd Wi-Fi radio module is also available for the XG 135w. An optional second power supply ensures business continuity for these models.

- Optionally available with integrated 802.11ac WLAN
- 8 GbE copper ports built-in, plus 1 SFP port
- Expansion bay for optional 3G/4G module
- 2nd Wi-Fi radio module option for XG 135w.
- Optional second power supply

See detailed [technical specifications](#)



Sophos XG Series Desktop Appliances: XG 86 and XG 86w

Technical Specifications

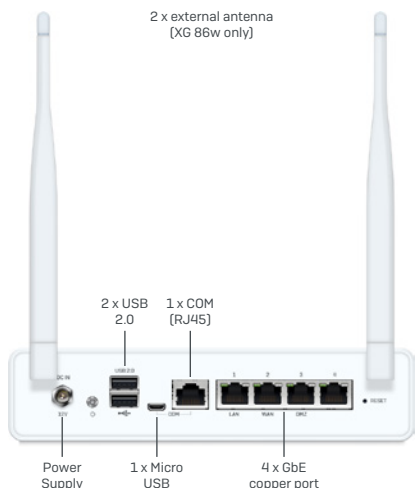
Note: The XG 86 and 86w do not support some advanced features like on-box reporting, dual AV scanning, WAF AV scanning and the email message transfer agent (MTA) functionality. If you need these capabilities, the XG 106(w) is recommended.

Please note: The throughput data below is based upon version 17.x and will be updated shortly.

Front View



Back View



Environment

Power consumption	12W, 40.94 BTU/hr [idle] 20.4W, 69.6 BTU/hr [full load]
Operating temperature	0-40°C (operating) -20 to +80°C (storage)
Humidity	10%-90%, non-condensing

Product Certifications

Certifications	CB, CE, FCC, ISED [IC], VCCI, RCM, UL, CCC, BIS, Anatel, KC (w-model only)
----------------	--

Performance ¹	XG 86(w) Rev. 1
Firewall throughput	3 Gbps
Firewall IMIX	800 Mbps
VPN throughput	225 Mbps
IPS throughput	580 Mbps
NGFW (IPS + App Ctrl) max.	310 Mbps
Antivirus throughput (proxy)	360 Mbps
Concurrent connections	3,200,000
New connections/sec	15,000
Maximum licensed users	unrestricted

Wireless Specification [XG 86w only]

No. of antennas	2 external
MIMO capabilities	2 x 2:2
Wireless interface	802.11a/b/g/n/ac (2.4 GHz / 5 GHz)

Physical interfaces

Storage	16 GB eMMC
Ethernet interfaces (fixed)	4 GbE copper
I/O ports (rear)	2 x USB 2.0 1 x Micro-USB 1 x COM (RJ45)
Power supply	External auto ranging DC: 12V, 100-240VAC, 24W@50-60 Hz

Physical specifications

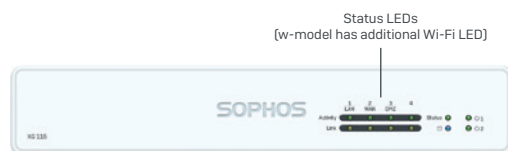
Mounting	Rackmount kit available (to be ordered separately)
Dimensions Width x Depth x Height	190 x 117 x 43 mm 7.48 x 4.61 x 1.69 inches
Weight	0.75 kg / 1.65 lbs (unpacked) 1.9 kg / 4.19 lbs (packed) (w model minimally higher)

Sophos XG Series Desktop Appliances: XG 106, XG 106w, XG 115, XG 115w

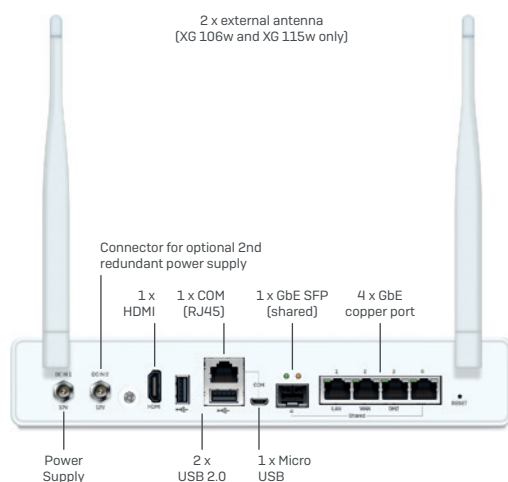
Technical Specifications

Please note: The throughput data below is based upon version 17.x and will be updated shortly.

Front View



Back View



Environment

Power consumption	8.88W, 30.28 BTU/hr [idle] 10.44W, 35.6 BTU/hr [full load]
Operating temperature	0-40°C (operating) -20 to +80°C (storage)
Humidity	10%-90%, non-condensing

Product Certifications

Certifications	CB, CE, FCC, ISED (IC), VCCI, RCM, UL, CCC, BIS, Anatel, KC (w-model only)
----------------	--

Performance ¹	XG 106(w) Rev. 1	XG 115(w) Rev. 3
Firewall throughput	3,5 Gbps	4 Gbps
Firewall IMIX	1,8 Gbps	2,0 Gbps
VPN throughput	360 Mbps	490 Mbps
IPS throughput	970 Mbps	1,22 Gbps
NGFW (IPS + App Ctrl) max.	480 Mbps	1 Gbps
Antivirus throughput (proxy)	450 Mbps	600 Mbps
Concurrent connections	3,200,000	6,000,000
New connections/sec	28,000	35,000
Maximum licensed users	unrestricted	unrestricted

Wireless Specification (XG 106w and XG 115w only)

No. of antennas	2 external
MIMO capabilities	2 x 2:2
Wireless interface	802.11a/b/g/n/ac [2.4 GHz / 5 GHz]

Physical interfaces

Storage (local quarantine/logs)	integrated SSD
Ethernet interfaces (fixed)	4 GbE copper 1 GbE SFP (shared)*
Connectivity modules (optional)	SFP DSL module (VDSL2) SFP Transceivers
I/O ports (rear)	2 x USB 2.0 1 x Micro-USB 1 x COM (RJ45) 1 x HDMI
Power supply	External auto ranging DC: 12V, 100-240VAC, 36W@50-60 Hz Redundant PSU optional (external)

Physical specifications

Mounting	Rackmount kit available (to be ordered separately)
Dimensions Width x Depth x Height	245 x 157 x 44 mm 9.65 x 6.18 x 1.73 inches
Weight	1.17 kg / 2.58 lbs (unpacked) 2.4 kg / 5.29 lbs (packed) (w models minimally higher)

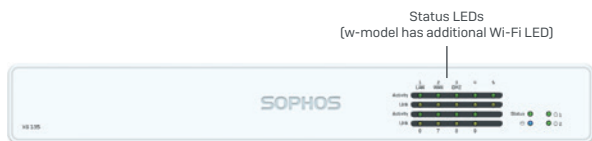
* SFP transceivers sold separately

Sophos XG Series Desktop Appliances: XG 125, XG 125w, XG 135, XG 135w

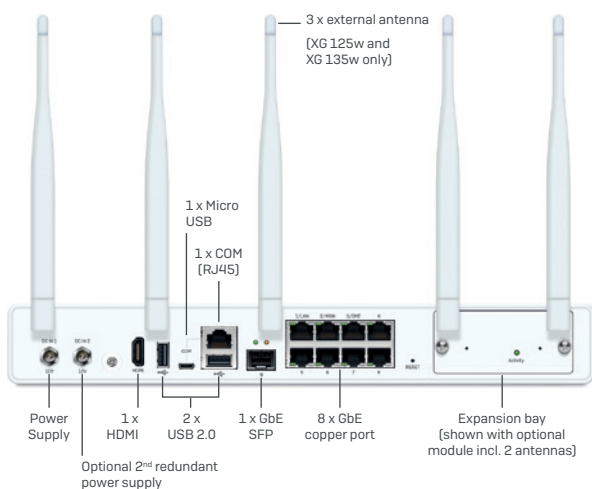
Technical Specifications

Please note: The throughput data below is based upon version 17.x and will be updated shortly.

Front View



Back View



Environment

Power consumption	18.6W, 63.426 BTU/hr (idle) 20.04W, 68.336 BTU/hr (full load)
Operating temperature	0-40°C (operating) -20 to +80°C (storage)
Humidity	10%-90%, non-condensing

Product Certifications

Certifications	CB, UL, CE, FCC, ISED, VCCI, MIC (Japan), RCM, CCC, KC Planned: BIS
----------------	---

Performance ¹	XG 125(w) Rev. 3	XG 135(w) Rev. 3
Firewall throughput	6,5 Gbps	8 Gbps
Firewall IMIX	2,5 Gbps	5 Gbps
VPN throughput	700 Mbps	1,18 Gbps
IPS throughput	1,53 Gbps	2,48 Gbps
NGFW (IPS + App Ctrl + WebFilter) max.	1,1 Gbps	1,2 Gbps
Antivirus throughput (proxy)	700 Mbps	1,58 Gbps
Concurrent connections	6,000,000	6,000,000
New connections/sec	35,000	85,000
Maximum licensed users	unrestricted	unrestricted

Wireless Specification (XG 125w and XG 135w only)

No. of antennas	3 external
MIMO capabilities	3 x 3:3
Wireless interface	802.11a/b/g/n/ac (2.4 GHz / 5 GHz)

Physical interfaces

Storage (local quarantine/logs)	integrated SSD
Ethernet interfaces (fixed)	8 GbE copper 1 GbE SFP*
No. of expansion slots	1
Connectivity Modules (optional)	SFP DSL module (VDSL2) 3G/4G module 802.11ac Wi-Fi radio 2x2:2 (XG 135w only) SFP transceivers
I/O ports (rear)	2 x USB 2.0 1 x Micro-USB 1 x COM (RJ45) 1 x HDMI
Power supply	External auto ranging DC: 12V, 100-240VAC, 36W@50-60 Hz Redundant PSU optional (external)

Physical specifications

Mounting	Rackmount kit available (to be ordered separately)
Dimensions Width x Depth x Height	320 x 212 x 44 mm 12.60 x 8.35 x 1.73 inches
Weight	1.9 kg / 4.19 lbs (unpacked) 3.3 kg / 7.27 lbs (packed) (w models minimally higher)

* SFP transceivers sold separately

Sophos XG Series 1U Rackmount Appliances

Our 1U rackmount appliances are the ideal choice for mid-sized and distributed organizations looking for a choice of connectivity options and the flexibility to adapt the network as and when needs change. Our redundancy options in this range are second to none.

1U Short

XG 210, XG 230

The Sophos XG 210 and XG 230 are designed to protect small to mid-sized businesses and branch offices. Based on the latest multi-core technology and equipped with 6 GbE copper ports, 2 GbE SFP fiber ports plus one Flexi Port slot to configure with an optional module, they provide high flexibility and throughput at an excellent price-to-performance ratio. An external redundant power supply is optional for these models.

- ▶ 6 GbE copper ports plus 2 GbE SFP built-in
- ▶ One 'Flexi Port' modular bay to use with a range of optional LAN modules
- ▶ Optional 2nd external power supply

See detailed [technical specifications](#)

XG 310, XG 330

The Sophos XG 310 and XG 330 are scalable appliances suitable for distributed organizations or mid-sized companies. With solid-state drives for on-box reporting, logs and spam quarantine, they're highly responsive even in high traffic environments. Each model is equipped with 8 GbE copper ports, 2 GbE SFP fiber ports, 2 10 GbE SFP+ fiber ports plus one Flexi Port slot to configure with an optional module. They provide optimal performance and flexibility plus redundancy through an optional external power supply.

- ▶ 8 GbE copper ports, 2 GbE SFP plus 2 10 GbE SFP+ built-in
- ▶ One 'Flexi Port' modular bay to use with a range of optional LAN modules
- ▶ Optional 2nd external power supply

See detailed [technical specifications](#)

1U Long

XG 430, XG 450

The Sophos XG 430 and XG 450 offer optimal performance and efficiency for distributed organizations or larger mid-sized companies. The connectivity options are second to none for rack mountable appliances, with each model coming equipped with 8 GbE copper ports, 2 10 GbE SFP+ ports and 2 additional Flexi Port slots which you can configure with your choice of optional modules. For high-availability, the XG 450 also offers unparalleled redundancy features in a 1U appliance with a second SSD (RAID) integrated and an optional second power supply is available for both models.

- ▶ 8 GbE copper ports plus 2 10 GbE SFP+ built-in
- ▶ Two 'Flexi Port' modular bays to use with a range of optional LAN modules
- ▶ 2nd SSD (RAID) integrated
- ▶ Optional 2nd internal power supply

See detailed [technical specifications](#)

Our connectivity tips:

With Sophos APX Series access points, you can manage your Wi-Fi networks using your firewall as a controller. And should you want to securely connect your smaller offices or remote locations to your main office, Sophos RED is the ideal choice.

[Find out more at the end of this brochure.](#)

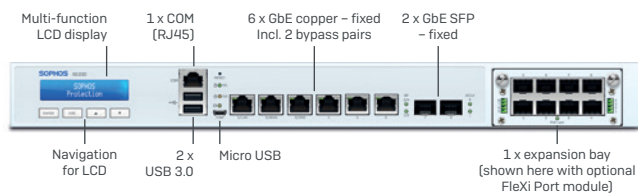


Sophos XG Series Rackmount Appliances: XG 210, XG 230

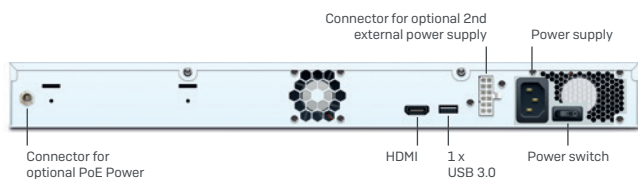
Technical Specifications

Please note: The throughput data below is based upon version 17.x and will be updated shortly.

Front View



Back View



Environment

Power consumption	XG 210: 19W, 65 BTU/hr (idle) 35W, 119 BTU/hr (full load) XG 230: 21W, 72 BTU/hr (idle) 41W, 141 BTU/hr (full load)
Operating temperature	0-40°C (operating) -20 to +80°C (storage)
Humidity	10%-90%, non-condensing

Product Certifications

Certifications	CB, UL, CE, FCC Class A, ISED, VCCI, RCM, CCC, KC, BIS
-----------------------	--

Performance ¹	XG 210 Rev. 3	XG 230 Rev. 2
Firewall throughput	16 Gbps	20 Gbps
Firewall IMIX	5.5 Gbps	6.8 Gbps
VPN throughput	1.45 Gbps	1.7 Gbps
IPS throughput	3 Gbps	4.2 Gbps
NGFW (IPS + App Ctrl) max.	2.9 Gbps	3.5 Gbps
Antivirus throughput (proxy)	2.3 Gbps	2.8 Gbps
Concurrent connections	8,200,000	8,200,000
New connections/sec	135,000	140,000
Maximum licensed users	unrestricted	unrestricted

Physical interfaces

Storage (local quarantine/logs)	integrated SSD
Ethernet interfaces (fixed)	6 GbE copper (incl. 2 bypass pairs) 2 GbE SFP*
No. of FleXi Port slots	1
FleXi Port modules (optional)	8 port GbE copper 8 port GbE SFP* 2 port 10 GbE SFP+* 4 port 10 GbE SFP+* 2 port 40 GbE QSFP+* 4 port GbE PoE 8 port GbE PoE 4 port GE copper LAN bypass
Connectivity modules (optional)	SFP DSL module (VDSL2) SFP/SFP+ Transceivers
I/O ports	2 x USB 3.0 (front) 1 x Micro USB (front) 1 x USB 3.0 (rear) 1 x COM (RJ45) (front) 1 x HDMI (rear)
Display	Multi-function LCD module
Power supply	Internal auto-ranging 100-240VAC, 50-60 Hz Redundant PSU optional (external)

Physical specifications

Mounting	1U rack mount (2 rackmount ears included)
Dimensions Width x Depth x Height	438 x 344.4 x 44 mm 17.24 x 13.56 x 1.75 inches
Weight	5.2 kg / 11.46lb (unpacked) 7.7 kg / 16.98 lbs (packed)

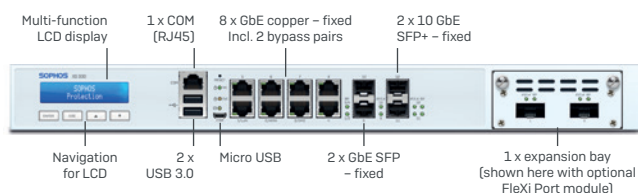
* Transceivers (mini GBICs) sold separately

Sophos XG Series Rackmount Appliances: XG 310, XG 330

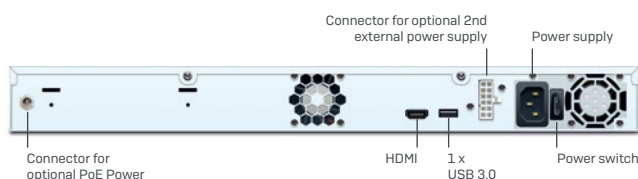
Technical Specifications

Please note: The throughput data below is based upon version 17.x and will be updated shortly.

Front View



Back View



Environment

Power consumption	XG 310: 32W, 109 BTU/hr (idle) 49W, 167 BTU/hr (full load) XG 330: 36W, 122 BTU/hr (idle) 54W, 184 BTU/hr (full load)
Operating temperature	0-40°C (operating) -20 to +80°C (storage)
Humidity	10%-90%, non-condensing

Product Certifications

Certifications	CB, UL, CE, FCC Class A, ISED, VCCI, RCM, CCC, KC, BIS
-----------------------	---

Performance ¹	XG 310 Rev. 2	XG 330 Rev. 2
Firewall throughput	28 Gbps	33 Gbps
Firewall IMIX	9.5 Gbps	12.5 Gbps
VPN throughput	2.75 Gbps	3.2 Gbps
IPS throughput	5.5 Gbps	8.5 Gbps
NGFW (IPS + App Ctrl) max.	4.5 Gbps	6.2 Gbps
Antivirus throughput (proxy)	3.3 Gbps	6 Gbps
Concurrent connections	17,500,000	17,500,000
New connections/sec	200,000	200,000
Maximum licensed users	unrestricted	unrestricted

Physical interfaces

Storage (local quarantine/logs)	integrated SSD
Ethernet interfaces (fixed)	8 GbE copper (incl. 2 bypass pairs) 2 GbE SFP* 2 10 GbE SFP+*
No. of Flexi Port slots	1
Flexi Port modules (optional)	8 port GbE copper 8 port GbE SFP* 2 port 10 GbE SFP+* 4 port 10 GbE SFP+* 2 port 40 GbE QSFP+* 4 port GbE PoE 8 port GbE PoE 4 port GbE copper LAN bypass
Connectivity modules (optional)	SFP DSL module (VDSL2) SFP/SFP+ Transceivers
I/O ports	2 x USB 3.0 (front) 1 x Micro USB (front) 1 x USB 3.0 (rear) 1 x COM (RJ45) (front) 1 x HDMI (rear)
Display	Multi-function LCD module
Power supply	Internal auto-ranging 100-240VAC, 50-60 Hz Redundant PSU optional (external)

Physical specifications

Mounting	1U rack mount [2 rackmount ears included]
Dimensions Width x Depth x Height	438 x 405.5 x 44 mm 17.24 x 15.96 x 1.75 inches
Weight	5.8 kg / 12.78 lbs (unpacked) 8.8 kg / 19.4 lbs (packed)

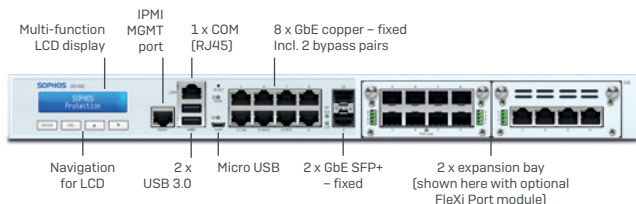
* Transceivers (mini GBICs) sold separately

Sophos XG Series Rackmount Appliances: XG 430, XG 450

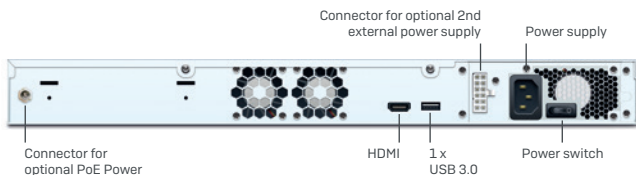
Technical Specifications

Please note: The throughput data below is based upon version 17.x and will be updated shortly.

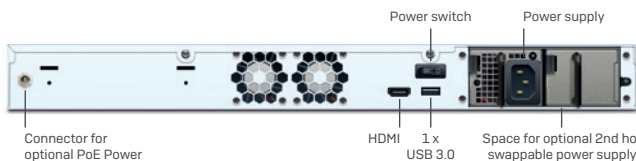
Front View



Back View XG 430



Back View XG 450



Environment

Power consumption	XG 430: 28W, 96 BTU/hr (idle) 79W, 270 BTU/hr (full load) XG 450: 31W, 107 BTU/hr (idle) 83W, 283 BTU/hr (full load)
Operating temperature	0-40°C (operating) -20 to + 80°C (storage)
Humidity	10%-90%, non-condensing

Product Certifications

Certifications	CB, UL, CE, FCC Class A, ISED, VCCI, RCM, CCC, KC, BIS
-----------------------	--

Performance ¹	XG 430 Rev. 2	XG 450 Rev. 2
Firewall throughput	41 Gbps	50 Gbps
Firewall IMIX	14.5 Gbps	17.5 Gbps
VPN throughput	4.8 Gbps	5.5 Gbps
IPS throughput	9 Gbps	10 Gbps
NGFW (IPS + App Ctrl) max.	7 Gbps	9.2 Gbps
Antivirus throughput (proxy)	6.5 Gbps	7 Gbps
Concurrent connections	20,000,000	20,000,000
New connections/sec	200,000	200,000
Maximum licensed users	unrestricted	

Physical interfaces

Storage (local quarantine/logs)	integrated SSD	2 x integrated SSD
Ethernet interfaces (fixed)	8 GbE copper (incl. 2 bypass pairs) 2 10 GbE SFP+*	
No. of FleXi Port slots	2	
FleXi Port modules (optional)	8 port GbE copper 8 port GbE SFP+* 2 port 10 GbE SFP+* 4 port 10 GbE SFP+* 2 port 40 GbE QSFP+* 4 port GbE PoE 8 port GbE PoE 4 port GbE copper LAN bypass	
Connectivity modules (optional)	SFP DSL module (VDSL2) SFP/SFP+ Transceivers	
I/O ports	2 x USB 3.0 (front) 1 x Micro USB (front) 1 x USB 3.0 (rear) 1 x COM (RJ45) (front) 1 x IPMI (front) 1 x HDMI (rear)	
Display	Multi-function LCD module	
Power supply	Internal auto-ranging 100-240VAC, 50-60 Hz Redundant PSU optional (external)	Internal auto-ranging 100-240VAC, 50-60 Hz Hot Swap Redundant PSU optional (internal)

Physical specifications

Mounting	1U rackmount (sliding rails incl.)	
Dimensions Width x Depth x Height	438 x 507.7 x 44 mm 17.24 x 19.99 x 1.75 inches	
Weight	7.6 kg / 16.76 lbs (unpacked) 13.7 kg / 30.2 lbs (packed)	7.8 kg / 17.2 lbs (unpacked) 14.8 kg / 32.63 lbs (packed)

* Transceivers (mini GBICs) sold separately

Sophos XG Series 2U Rackmount Appliances

Our 2U rackmount appliances are built for distributed enterprises looking for a firewall to handle higher traffic volumes. These models offer you the flexibility to tailor your connectivity to your environment and come with the redundancy features to keep your business running.

XG 550, XG 650

The Sophos XG 550 and XG 650 are high-performance firewalls equipped to provide protection for larger distributed and growing organizations. They offer CPU technology to effortlessly handle use as an all-in-one solution or a powerful next-generation firewall. The models offer either 4 (XG 550) or 6 (XG 650) Flexi Port expansion bays to tailor your connectivity to your environment. An 8 port GbE copper module is supplied as a default. Hot-swappable dual SSDs and power supplies are standard redundancy features in this class.

- ▶ 8 port GbE copper module supplied as default
- ▶ Multiple expansion bays to add connectivity modules incl. options for up to 40 GbE QSFP+
- ▶ Dual SSDs and power supplies

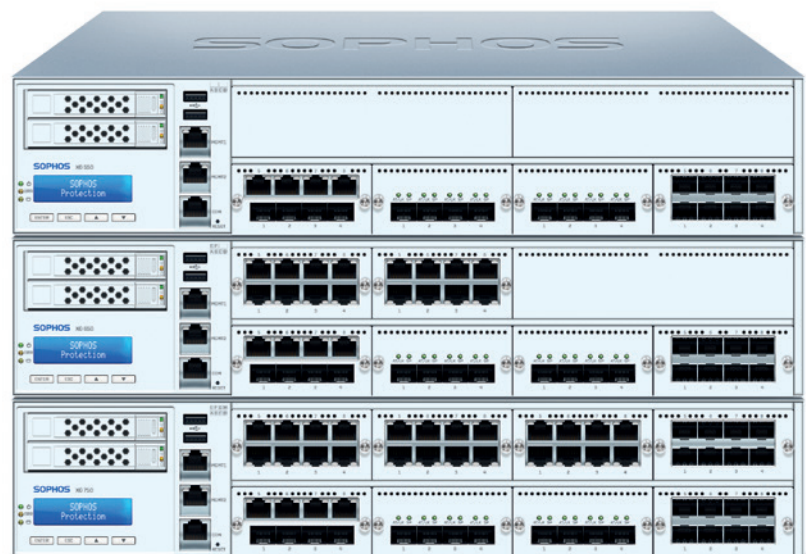
See detailed [technical specifications](#)

XG 750

The Sophos XG 750 is a high performance firewall suitable for high traffic and larger distributed enterprise environments. Multi-core CPUs and redundancy features such as dual SSDs, power supplies and swappable fans, ensure you have the best performance and that your network stays protected at all times. With a total of 8 Flexi Port bays, one of which comes equipped with a default 8 port GbE copper module, connectivity knows no bounds and can reach a maximum of 64 ports using the optional modules.

- ▶ 8 port GbE copper module supplied as default
- ▶ Eight expansion bays to add connectivity modules incl. options for up to 40 GbE QSFP+
- ▶ Dual SSDs, power supplies, and swappable fans

See detailed [technical specifications](#)

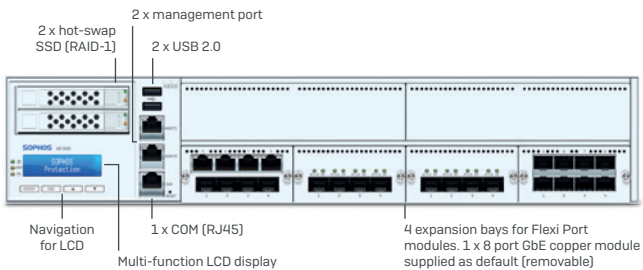


Sophos XG Series Rackmount Appliances: XG 550, XG 650

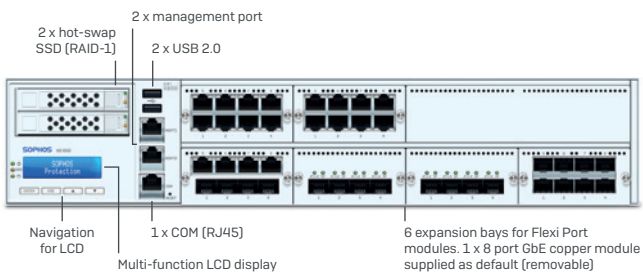
Technical Specifications

Please note: The throughput data below is based upon version 17.x and will be updated shortly.

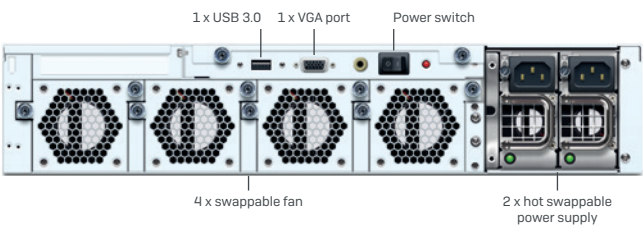
Front View XG 550



Front View XG 650



Back View



Environment

Power consumption	XG 550: 270.5W, 922.98BTU/hr (idle) 416.1W, 1419.79BTU/hr (full load) XG 650: 320.5W, 1093.59BTU/hr (idle) 493.1W, 1682.53BTU/hr (full load)
Operating temperature	0-40°C (operating) -40 to +70°C (storage)
Humidity	5%-90%, non-condensing

Product Certifications

Certifications	CB, UL, CE, FCC Class A, ISED, VCCI, RCM, CCC, KC, BIS
----------------	---

Performance ¹	XG 550 Rev. 2	XG 650 Rev. 2
Firewall throughput	65 Gbps	85 Gbps
Firewall IMIX	23 Gbps	28 Gbps
VPN throughput	8.4 Gbps	9 Gbps
IPS throughput	17 Gbps	20 Gbps
NGFW (IPS + App Ctrl + WebFilter) max.	11.7 Gbps	16.4 Gbps
Antivirus throughput (proxy)	10 Gbps	13 Gbps
Concurrent connections	30,000,000	
New connections/sec	220,000	240,000
Maximum licensed users	unrestricted	

Physical interfaces

Storage (local quarantine/logs)	2 x integrated hot-swap SSD (RAID)	
Ethernet interfaces (removable)	8 GbE copper	
No. of Flexi Port slots	4	6
Flexi Port modules (optional)	8 port GbE copper 8 port GbE SFP* 2 port 10 GbE SFP+* 2 port 40 GbE QSFP+* 4 port 10 GbE SFP+* 4 port SFP* plus 4 port GbE copper LAN bypass	
Connectivity modules (optional)	SFP DSL module (VDSL2) SFP/SFP+ Transceivers	
I/O ports	2 x USB 2.0 (front) 1 x USB 3.0 (rear) 2 x Mgmt Port (eth0/eth1, front) 1 x COM (RJ45) (front) 1 x VGA (rear)	
Display	Multi-function LCD module	
Power supply	2 x hot-swap internal auto-ranging 100-240VAC, 50-60 Hz PSU	

Physical specifications

Mounting	2U sliding rails (included)
Dimensions Width x Depth x Height	438 x 600 x 88 mm 17.24 x 23.62 x 3.46 inches
Weight	17.8 kg / 39.24 lbs (unpacked) 27 kg / 59.53 lbs (packed)

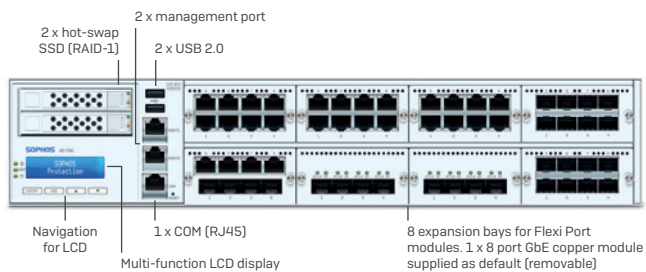
* Transceivers (mini GBICs) sold separately

Sophos XG Series Rackmount Appliances: XG 750

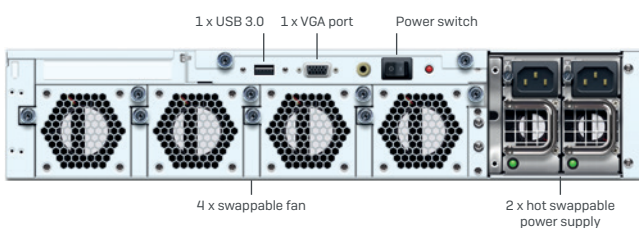
Technical Specifications

Please note: The throughput data below is based upon version 17.x and will be updated shortly.

Front View



Back View



Environment

Power consumption	326.5W, 1114.01BTU/hr (idle) 512.2W, 1747.62BTU/hr (full load)
Operating temperature	0-40°C (operating) -40 to +70°C (storage)
Humidity	5%-90%, non-condensing

Product Certifications

Certifications	CB, UL, CE, FCC Class A, ISED, VCCI, RCM, CCC, KC, BIS
----------------	---

Performance¹

	XG 750 Rev. 2
Firewall throughput	100 Gbps
Firewall IMIX	33.5 Gbps
VPN throughput	11 Gbps
IPS throughput	22 Gbps
NGFW (IPS + App Ctrl + WebFilter) max.	18.6 Gbps
Antivirus throughput (proxy)	17 Gbps
Concurrent connections	30,000,000
New connections/sec	300,000
Maximum licensed users	unrestricted

Physical interfaces

Storage (local quarantine/logs)	2 x integrated hot-swap SSD (RAID)
Ethernet interfaces (removable)	8 GbE copper
No. of Flexi Port slots	8
Flexi Port modules (optional)	8 port GbE copper 8 port GbE SFP* 2 port 10 GbE SFP+* 2 port 40 GbE QSFP+* 4 port 10 GbE SFP+* 4 port SFP* plus 4 port GbE copper LAN bypass
Connectivity modules (optional)	SFP DSL module (VDSL2) SFP/SFP+ Transceivers
I/O ports	2 x USB 2.0 (front) 1 x USB 3.0 (rear) 2 x Mgmt Port (eth0/eth1, front) 1 x COM (RJ45) (front) 1 x VGA (rear)
Display	Multi-function LCD module
Power supply	2 x hot-swap external auto ranging 100-240VAC, 50-60 Hz

Physical specifications

Mounting	2U sliding rails (included)
Dimensions Width x Depth x Height	438 x 600 x 88 mm 17.24 x 23.62 x 3.46 inches
Weight	17.8 kg / 39.24 lbs (unpacked) 27 kg / 59.53 lbs (packed)

* Transceivers (mini GBICs) sold separately

Adapt Connectivity with Optional Modules















Connectivity Modules

Add additional connectivity options to your appliances to enhance the range and performance of your network.

Modules		
<p>3G/4G Module: (for XG/SG 125(w) and 135(w) Rev. 3 only) 2 external antennas, SIM card slot Supports LTE (Cat-6)/DC-HSPA+/HSPA+/HSPA/ UMTS (WCDMA, APAC version also TD-SCDMA)</p>	<p>DSL Modem – SFP: (for all current SG/XG Series with an SFP Port) SFP format supports all VDSL2 standards defined in ITU –T G.993.2, G.994.1, G.997.1, and the VDSL2 profiles 8a, 8b, 8c, 8d, 12a, 12b, 17a</p>	<p>2nd Wi-Fi Radio Module: (for XG/SG 135w Rev.3 only) 802.11a/b/g/n/ac, 2 x 2 MIMO, 2.4 or 5 GHz, 2 external antennas</p>

FleXi Port Modules for 1U and 2U

Configure your hardware to suit your infrastructure and change it as and when you need to. Our optional FleXi Port LAN modules give you the freedom to select the connectivity you need – copper, fiber, 10GbE, 40 GbE – you decide.

FleXi Port Modules for 1U	FleXi Port Modules for 2U
 <p>8 port GbE copper FleXi Port module (for SG/XG 2xx/3xx/4xx only)</p>	 <p>8 port GbE copper FleXi Port module (for XG 750 and SG/XG 550/650 Rev.2 only)</p>
 <p>8 port GbE SFP FleXi Port module (for SG/XG 2xx/3xx/4xx only)</p>	 <p>8 port GbE SFP FleXi Port module (for XG 750 and SG/XG 550/650 Rev.2 only)</p>
 <p>2 port 10 GbE SFP+ FleXi Port module (for SG/XG 2xx/3xx/4xx only)</p>	 <p>2 port 10 GbE SFP+ FleXi Port module (for XG 750 and SG/XG 550/650 Rev.2 only)</p>
 <p>4 port 10 GbE SFP+ FleXi Port module (for SG/XG 2xx/3xx/4xx only)</p>	 <p>4 port 10 GbE SFP+ FleXi Port module (for XG 750 and SG/XG 550/650 Rev.2 only)</p>
 <p>4 port GbE copper LAN bypass FleXi Port module (for XG 2xx/3xx/4xx only)</p>	 <p>4 port GbE SFP plus 4 port GbE copper LAN bypass FleXi port module (for XG 750 and XG 550/650 Rev.2 only)</p>
 <p>2 port 40 GbE QSFP+ FleXi Port module (for SG/XG 210 Rev.3 and SG/XG 230, 3xx and 4xx Rev.2 only)</p>	 <p>2 port 40 GbE QSFP+ FleXi Port module (for XG 750 and SG/XG 550/650 Rev.2 only)</p>
 <p>4 port GbE copper PoE FleXi Port module (for SG/XG 210 Rev.3 and SG/XG 230, 3xx and 4xx Rev.2 only)</p>	
 <p>8 port GbE copper PoE FleXi Port module (for SG/XG 210 Rev.3 and SG/XG 230, 3xx and 4xx Rev.2 only)</p>	

Please note: Transceivers (mini GBICs) are sold separately.

Sophos Wireless Protection

Simple, Secure, Reliable

Simplify and secure your wireless networking using XG Firewall as a wireless controller. Your Sophos Access Points are automatically discovered when they are connected, allowing you to configure a variety of corporate, guest, or contractor wireless networks quickly and easily. You get seamless wireless integration with your firewall protection, consistent security policies across both wired and wireless traffic, and reliable high-speed connectivity.





Hardware Appliances with integrated Wi-Fi

All our XG Series desktop appliances are available with an integrated wireless access point. Coverage can be further extended by adding Sophos Access Points.

Technical Specifications

Our APX Series access points are built on the latest enterprise-class, high-speed wireless chipsets with custom designed antennas, top performing CPU and memory resources, and hardware accelerated encryption. With 802.11ac Wave 2 technology, they are custom-built for increased throughput at load and better performance and security.

Please note: APX 320/530/740 support was added in v17.5 Maintenance Release 3. Support for the APX 120 was added in v17.5 Maintenance Release 5.

Model	APX 120	APX 320	APX 530	APX 740
				
Deployment	Indoor; desktop, wall, or ceiling mount.			
WLAN Standards	802.11 a/b/g/n/ac			
Radios	1x 2.4 GHz single band 1x 5 GHz single band	1x 2.4 GHz/5 GHz dual-band 1x 5 GHz single band 1x Bluetooth low energy (BLE)	1x 2.4 GHz single band 1x 5 GHz single band 1x Bluetooth low energy (BLE)	
Antennas	2x internal dual-band antenna for Radio-1 and 2	2x internal dual-band antenna for Radio-1 2x internal 5 GHz antenna for Radio-2 1x internal 2.4 GHz antenna for BLE	3x internal 2.4 GHz antenna for Radio-1 3x internal 5 GHz antenna for Radio-2 1x internal 2.4 GHz antenna for BLE	4x internal 2.4 GHz antenna for Radio-1 4x internal 5 GHz antenna for Radio-2 1x internal 2.4 GHz antenna for BLE
Performance	2x2:2 MU-MIMO		3x3:3 MU-MIMO	4x4:4 MU-MIMO
Interfaces	1x 12V DC-in 1x RJ45 10/100/1000 Ethernet w/PoE	1x RJ45 connector console serial port 1x RJ45 10/100/1000 Ethernet w/PoE	1x RJ45 connector console serial port 1x RJ45 10/100/1000 Ethernet port 1x RJ45 10/100/1000 Ethernet w/PoE	
Power (MAX.)	11.8 W	11.5 W	16.7 W	22.4 W
Power-over-ethernet (MIN.)	PoE 802.3af		PoE+ 802.3at	
Dimensions Width x Depth x Height	144 x 144 x 33.5 mm 5.67 x 5.67 x 1.32 inches	155 x 155 x 38 mm 6.11 x 6.11 x 1.5 inches	183 x 183 x 39 mm 7.21 x 7.21 x 1.54 inches	195 x 195 x 43 mm 7.68 x 7.68 x 1.7 inches
Weight	0.256 kg	0.474 kg	0.922 kg	1.012 kg

If you prefer to free up the resources on your firewall and are looking for enhanced scalability, you can optionally manage your Sophos access points in the cloud using Sophos Central. A separate license is required.

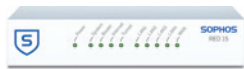


Please check our website or reach out to your authorized Sophos Partner for more details.

Sophos RED: Empowering your SD-WAN strategy

Sophos has long been a pioneer in providing an easy-to-use, secure way to connect branch offices and other remote locations. XG Firewall includes a number of SD-WAN features to help you to accelerate application performance and get better visibility into network health to ensure that your remote locations enjoy the same performance as your main office.

Our RED devices are built on the latest enterprise-class, high-speed networking platforms. They work with your XG Firewall whether you've deployed as hardware, software or in the public cloud. Our full range of Sophos Wireless Access Points are also compatible with Sophos RED. To use a Sophos RED you will need an active Network Protection subscription for XG Firewall.

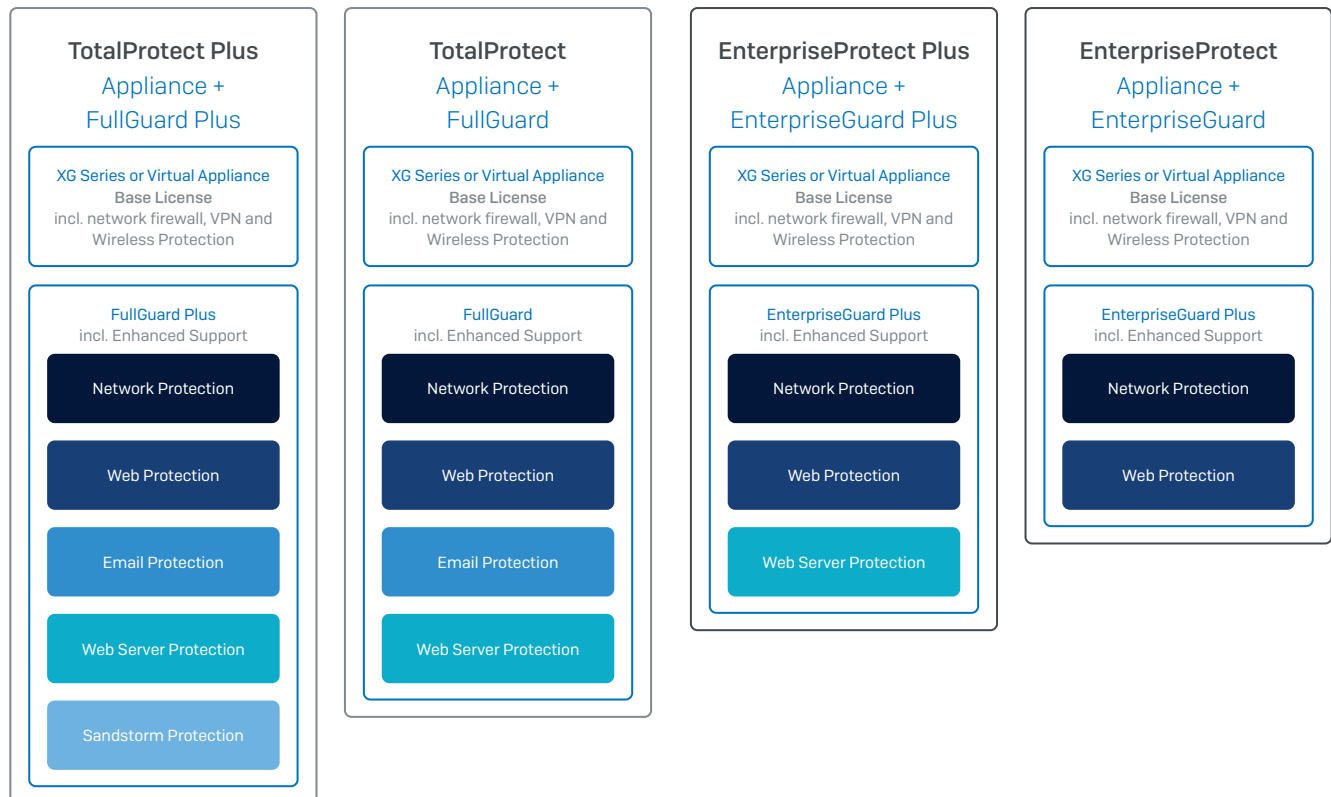
Technical Specifications

RED appliance	RED 15	RED 15w	RED 50
			
Capacity			
Maximum users	Unrestricted	Unrestricted	Unrestricted
Maximum throughput	90 Mbps	90 Mbps	360 Mbps
Wireless specification			
No. of antennas	-	2 external	-
MIMO capabilities	-	2x2:2	-
Wireless interface	-	802.11 a/b/g/n (2.4 / 5 GHz)	-
Physical interfaces			
LAN interfaces	4 x 10/100/1000 Base-TX	4 x 10/100/1000 Base-TX	4 x 10/100/1000 Base-TX
WAN interfaces	1 x 10/100/1000 Base-TX	1 x 10/100/1000 Base-TX	2 x 10/100/1000 Base-TX
USB interfaces	1 x USB 2.0	1 x USB 2.0	2 x USB 2.0
Serial console	1 x RJ45 console	1 x RJ45 console	1 x RJ45 console
LED display	Power, system, router, Internet, tunnel, 4 x LAN, WAN	Power, system, router, Internet, tunnel, 4 x LAN, WAN	Power, error, 4 x LAN, 2 x WAN
Power supply	110-240 V, 50-60 Hz, max. 1.5 A	110-240 V, 50-60 Hz, max. 1.5 A	100-240 V, 50-60 Hz, 1.3 A
Physical specifications			
Chassis	Heavy-duty steel	Heavy-duty steel	Heavy-duty steel
Mounting	Desktop	Desktop	Desktop/wall/rack (optional)
Dimensions Width x Depth x Height	165 x 134.8 x 34 mm 6.50 x 5.31 x 1.34 inches	165 x 134.8 x 34 mm 6.50 x 5.31 x 1.34 inches	216 x 189 x 44 mm 8.51 x 7.45 x 1.74 inches
Weight	600 g / 1.31 lbs	600 g / 1.31 lbs	1.1 kg / 2.43 lbs
Power consumption	< 7 W	< 7 W	38.2 W (max.)
Temperature	0-40°C (operating), -20-80°C (storage)	0-40°C (operating), -20-80°C (storage)	0-40°C (operating), -20-70°C (storage)
Humidity	10-90% (operating), 5-95% (storage), non-condensing	10-90% (operating), 5-95% (storage), non-condensing	5-90% (operating), 5-95% (storage), non-condensing
Safety regulations			
Certifications	CE, FCC Class B, VCCI, RCM, UL, CCC	CE, FCC, UL, IC, VCCI, MIC, CCC, SRRC, RCM	CE, FCC Class A, VCCI, C-Tick, UL

Licensing

The purchase price of every XG Firewall appliance, no matter whether hardware, software/virtual, or in the public cloud includes a perpetual Base License. This includes basic firewall functionality including, IPSec, SSL VPN and full wireless protection.

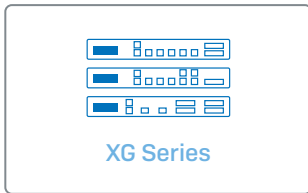
You can extend protection according to your individual needs and deployment scenario, by purchasing individual subscriptions or opting for one of our value bundles.



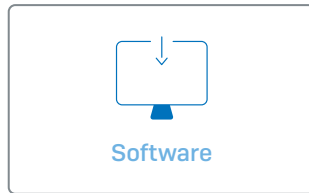
Full details of XG Firewall licensing can be found on our website: <https://community.sophos.com/kb/en-us/131806>

Deployment Options

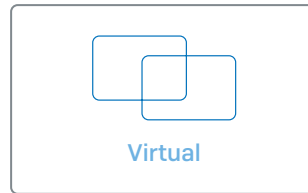
XG Firewall offers a full range of top-performing hardware appliances, support for all the popular virtualization platforms, and the Azure public cloud, and even a software appliance you can install on your own hardware.



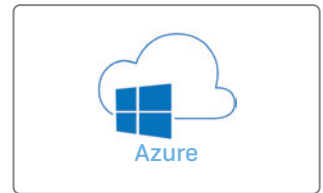
Purpose-built devices to provide the ultimate in performance.



Install the Sophos Firewall OS image on your own Intel hardware or server.



Install on VMware, Citrix, Microsoft Hyper-V and KVM.



Protect your network infrastructure in the Azure cloud.

Support

A simple approach to comprehensive support

We build products that are simple yet comprehensive. And, we take the same approach with our support. With options ranging from basic technical support to those including direct access to senior support engineers and customized delivery.

Licenses names	Standard	Enhanced	Enhanced Plus
Support Via telephone and email	Included with purchase For 90 days (business hours only)	Included in all bundles Included (24x7)	VIP Access (24x7)
Security Updates & Patches For the life of the product	Included with an active software subscription	Included with an active software subscription	Included with an active software subscription
Software Feature Updates & Upgrades	Included 90-days	Included	Included
Consulting Remote consultation on your firewall configuration and security with a Sophos Senior Technical Support Engineer			Included (up to 4 hours)
Warranty and RMA For all hardware appliances	1 year (return / replace)	Advance Exchange (max. 5 years)	Advance Exchange (max. 5 years)
Technical Account Manager Dedicated named technical account manager		Optional (extra cost)	Optional (extra cost)

Further resources

We have a broad range of resources available where you can find out more about XG Firewall and get further product support.

- XG Firewall Web - sophos.com/firewall
- XG Hardware models - sophos.com/compare-xg

Try it for free – business and even at home

If you have any additional questions visit sophos.com or give one of our Sales Agents a call.

Free 30-day trial – no strings attached

If you'd like to take it for a test drive you can get the full-featured product simply sign-up for our free 30-day trial.

See it in action now

You can take a walkthrough of the user interface with our interactive demo or watch videos showing you just how we make network security simple.

Visit sophos.com/xgfirewall

Free Home Use version

Our Sophos XG Firewall Home Edition is a fully-equipped software version that gives you complete network, web, mail, and web application security with VPN functionality, for home-use only and limited to 4 virtual cores, 6 GB of RAM.

Visit sophos.com/freetools

¹ General: Max. throughput measured under ideal test conditions using SF-OS 17.0 with App-classification disabled using industry standard Spirent /Avalanche performance test and Ixia test tools. Actual performance may vary depending on network conditions and activated services.

- FW: UDP throughput based on RFC 2544 using 1518 Byte packet size.
- FW IMIX: UDP throughput based on a combination of 48 bytes, 576 bytes and 1518 bytes packet sizes.
- IPS/NGFW: HTTP throughput using default IPS ruleset and 512KB object size [NGFW: with AppCtrl enabled]
- VPN: HTTP throughput using multiple tunnels and 512KB HTTP response size
- AV: HTTP throughput using Web proxy and 200KB response size

United Kingdom and Worldwide Sales
Tel: +44 (0)8447 671131
Email: sales@sophos.com

North American Sales
Toll Free: 1-866-866-2802
Email: nasales@sophos.com

Australia and New Zealand Sales
Tel: +61 2 9409 9100
Email: sales@sophos.com.au

Asia Sales
Tel: +65 62244168
Email: salesasia@sophos.com