

## 10G Media Converter, SFP+

### ➤ Features

- Comply with IEEE802.3an(10Gbase-T), IEEE802.3ae(10Gbase-SR/LR/ER/ZR);
- Support ITUT prescribed DWDM/CWDM wavelength;
- Support DMI function for SFP+ fiber module;
- Support Jumbo Frame;
- Support Loop-back test function;
- Plug-and-play, easy to install;
- Support stand-alone or wall Installation;
- Card-type can insert to 2U 19", 16 slots Rackmount chassis;
- LED indicators for easy diagnosis and monitoring work status;
- Provide reliable long-distance connection;(300 meters to 100km);
- Support External power 5~12VDC input;
- Support 0-50°C wide operating temperature range;
- Low power consumption, No fan, Metal casing;
- Warranty:3years



### ➤ Introduction

Ethernet Media Converter, also known as Fiber Optic Media Converter, is a network device that transparently converts data between short-distance electrical signals and long-distance fiber optic signals, plug-and-play, no configuration required, can be operated at wide temperatures range from 0 to 50°C.

UPCOM 10G Fiber Media Converter MC401 can provide high-performance fiber-to-copper connections between 10G SFP+ module and Ethernet, it can be extended anywhere from 300 meters to 100 kilometers depending on the SFP module selected. widely used in Telecommunication room, R&D laboratory, Data center applications, it's an ideal network device for network backbone (SAN, LAN, MAN).

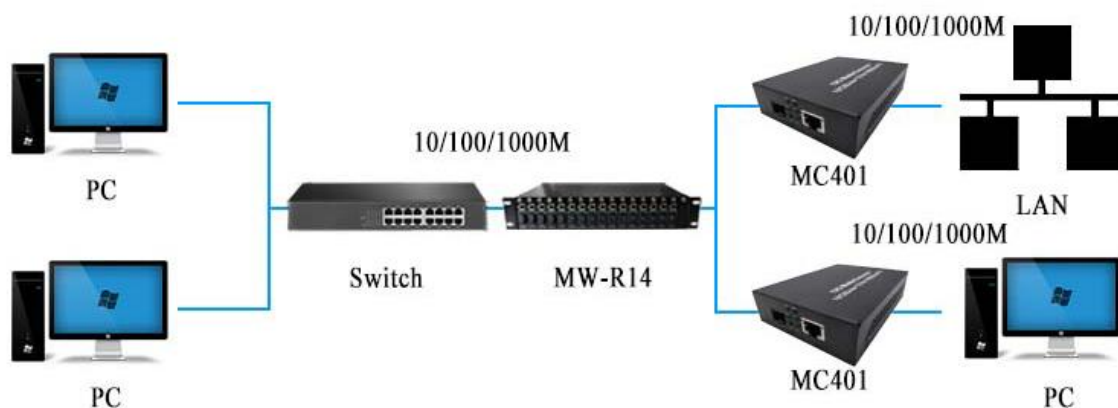
The 10G SFP+ transceiver complies with SFF-8431, SFF-8432 and IEEE 802.3ae 10GBASE-SR. Digital diagnostics functions are available via a 2-wire serial interface, as specified in SFF-8472. the fully SFP compliant form factor provides hot plug ability, easy optical port upgrades and low EMI emission. adopt duplex LC connector, can reach 300M through multi-mode fiber and 100km through single mode fiber.

MC401 supports stand-alone installation, and can also be inserted into a 2U, 19",16 slots Rack-mount Chassis, with built-in LED indicators for easy diagnosing and monitoring status.

## ➤ Specification

Specification	
Product Name	10G Ethernet Media Converter
Product Model	MC401
Port Definition	1-port 10G BASE-T +1-port 10G SFP+ slot
Standards	Comply with IEEE802.3an(10Gbase-T), IEEE802.3ae(10Gbase-SR/LR/ER/ZR)
RJ45 port rate	10Gbps auto negotiation
Optic port rate	10GMbps
Working Mode	Asynchronous, point to point
Transmission mode	Half/Full duplex
Forwarding Rate	14,880,950/S
Transfer distance	
RJ45port	100m
Fiber optic	20,40,80,100km(SM),300m(MM) optional
RJ45 port cable	UTP 5E
Fiber connector	LC connector
Fiber optic cables	Single Mode:8.3/125,8.7/125,9/125 or 10/125μm Muti-Mode:50/125,62.5/125μm
Wavelength	850nm,1310nm,1550nm
Power	
Power supply	External 5-12VDC
Consumption	<9W
Working Environment	
Operating Temperature	0-50°C
Storage temperature	-40°C to 70°C
Ambient Humidity	5%~95% (non-condensing)
MTBF	≥10.0000h
Physical Characteristics	
Shell	Iron
Dimension	94mm*70.5mm*26.5mm
Weight	390g(power external)
Installation	Desktop, 2U-16 slot rack-mount Chassis(card-type)
Warranty	
Warranty	3 Years
Certification	CE, FCC, RoHS

## ➤ Application



## ➤ Ordering Information

Model NO.	Description
MC401-M-03	10G Media Converter, Multi-mode, 300m, 5VDC, LC connector
MC401-S-20	10G Media Converter, Single-mode, 20Km 5VDC, LC connector
MC401-S-40	10G Media Converter, Single-mode, 40Km 5VDC, LC connector
MC401-S-80	10G Media Converter, Single-mode, 80Km 5VDC, LC connector
MC401-S-100	10G Media Converter, Single-mode, 100Km 5VDC, LC connector
MC401-SS-20	10G Media Converter, Single-mode, Single fiber, 20Km, 5VDC, LC connector
MC401-SS-40	10G Media Converter, Single-mode, Single fiber, 40Km, 5VDC, LC connector
MC401-SS-80	10G Media Converter, Single-mode, Single fiber, 80Km, 5VDC, LC connector

## ➤ Packing List

- 10G Ethernet Media Converter \*1
- DC5V power supply \*1
- User manual \* 1
- Certificate of quality \* 1
- Warranty card \* 1