

2-port 10/100/1000M Base-T(X) + 1-port 1000M FX

➤ Features

- Accord to IEEE802.1 10Base-T, IEEE802.3u 100Base-TX, IEEE802.3ab 1000Base-TX, IEEE802.3z 1000Base-SX/LX;
- Support MDI/MDI-X auto negotiation, 10M/100/1000M adaptive;
- Support flow control;
- Supports full /half duplex, Point-to-point transparent transmission;
- Support non-blocking wire-speed forwarding;
- Plug-and-play, no configuration is required;
- LED indicators for easy diagnosis and monitoring work status;
- Support External power 5VDC input;
- Support 0-50°C wide operating temperature range;
- Low power consumption, No fan, Metal casing;
- Support stand-alone or wall Installation;
- FCC Class A & CE approved, RoHS compliance;
- Warranty:3years



➤ Introduction

Ethernet Media Converter, also known as Fiber Optic Media Converter, is a network device that transparently converts data between short-distance electrical signals and long-distance fiber optic signals, plug-and-play, no configuration required, can be operated at wide temperatures range from 0 to 50°C.

UPCOM MC202 Fiber Media Converter support 2-port 10/100/1000M Base-T(X)+1-port 1000M FX, adopts durable metal housing, external DC5V, is a flexible and cost-effective solution that can extend transmission distances to 120km through a single-mode fiber, protecting data from noise and electromagnetic interference.

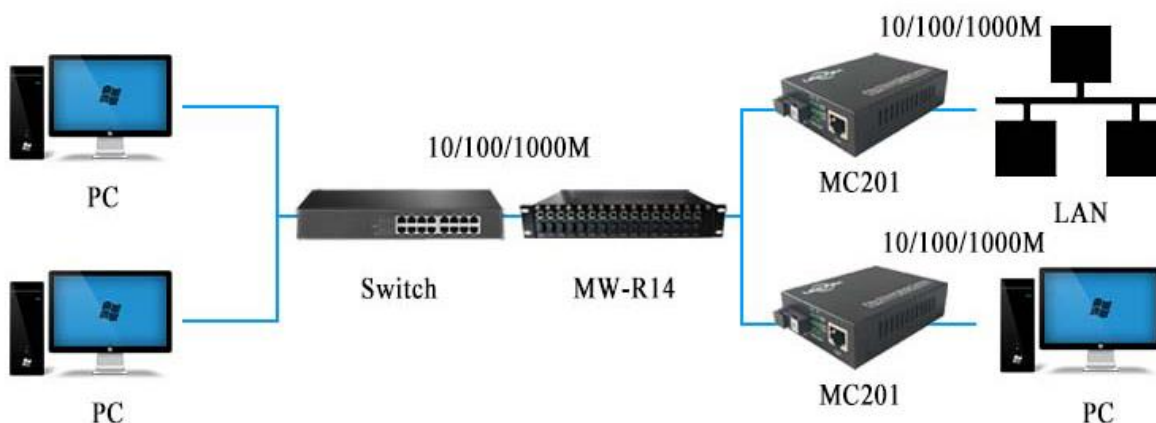
MC202 is ultra-small in size, with shielded RJ45 Ethernet jack, optional SC/ST/FC fiber-optic connector. Built-in auto-sensing function supports full or half-duplex Ethernet operation, widely used in MAN (metropolitan area network), security monitoring, intelligent transportation and other applications.

MC202 supports stand-alone installation, can realize the interconnection between repeaters, hubs, switches, terminals. all photoelectric interfaces conform to international standards, and the products are suitable for different harsh industrial environments. The installation and operating procedures of the Fiber Optic Media Converter are simple and straightforward. Operation status can be monitored through a set of Diagnostic LED located on the front panel, including single-mode and multi-mode transmission modes, the multi-mode can transmit 2km, single-mode can reach up to 120km.

➤ Specification

| Specification | |
|--------------------------|--|
| Product Name | 2-port 10/100/1000M Base-T(X)+1-port 1000M FX Ethernet Media Converter |
| Product Model | MC202 |
| Port Definition | 2-port 10/100/1000M Base-T(X)+1-port 1000M FX |
| Standards | IEEE802.1 10Base-T, IEEE802.3u 100Base-TX,IEEE802.3ab 1000Base-TX, IEEE802.3z 1000Base-SX/LX |
| RJ45 port rate | 10/100/1000Mbps auto negotiation |
| Optic port rate | 1000Mbps |
| Working Mode | Asynchronous, point to point |
| Transmission mode | Half/Full duplex |
| Forwarding Mode | Store and Forward(Full Wire Speed) |
| Transfer distance | |
| RJ45port | 100m |
| Fiber optic | 20,40,60,80,100,120km(SM),2 km(MM) optional |
| RJ45 port cable | UTP 5E |
| Fiber connector | SC, ST, FC optional |
| Fiber optic cables | Single Mode:8.3/125,8.7/125,9/125 or 10/125 μ m Muti-Mode:50/125,62.5/125 μ m |
| Wavelength | 850nm,1310nm,1550nm |
| Power | |
| Power supply | External 5VDC/1A |
| Consumption | <3W |
| Working Environment | |
| Operating Temperature | 0-50 $^{\circ}$ C |
| Storage temperature | -40 $^{\circ}$ C to 70 $^{\circ}$ C |
| Ambient Humidity | 5%~95% (non-condensing) |
| MTBF | \geq 10.0000h |
| Physical Characteristics | |
| Shell | Iron |
| Dimension | 94mm*70.5mm*26.5mm |
| Weight | 390g(power external) |
| Installation | Desktop, 2U-14 slot rack-mount Chassis |
| Warranty | |
| Warranty | 3 Years |
| Certification | CE, FCC, RoHS |

➤ Application



➤ Ordering Information

| Model NO. | Description |
|-------------|--|
| MC202-M-2 | 2-port 10/100/1000M Base-T(X)+1-port 1000M FX, Multi-mode, 2Km, 5VDC, SC/FC/ST optional |
| MC202-S-20 | 2-port 10/100/1000M Base-T(X)+1-port 1000M FX, Single-mode, 20Km, 5VDC, SC/FC/ST optional |
| MC202-S-40 | 2-port 10/100/1000M Base-T(X)+1-port 1000M FX, Single-mode, 40Km, 5VDC, SC/FC/ST optional |
| MC202-S-80 | 2-port 10/100/1000M Base-T(X)+1-port 1000M FX, Single-mode, 80Km, 5VDC, SC/FC/ST optional |
| MC202-S-120 | 2-port 10/100/1000M Base-T(X)+1-port 1000M FX, Single-mode, 120Km, 5VDC, SC/FC/ST optional |
| MC202-SS-20 | 2-port 10/100/1000M Base-T(X)+1-port 1000M FX, Single-mode, Single fiber, 20Km, 5VDC, SC/FC/ST |
| MC202-SS-40 | 2-port 10/100/1000M Base-T(X)+1-port 1000M FX, Single-mode, Single fiber, 40Km, 5VDC, SC/FC/ST |
| MC202-SS-80 | 2-port 10/100/1000M Base-T(X)+1-port 1000M FX, Single-mode, Single fiber, 80Km, 5VDC, SC/FC/ST |

➤ Packing List

- Ethernet Media Converter *1
- DC5V/1A power supply *1
- User manual * 1
- Certificate of quality * 1
- Warranty card * 1